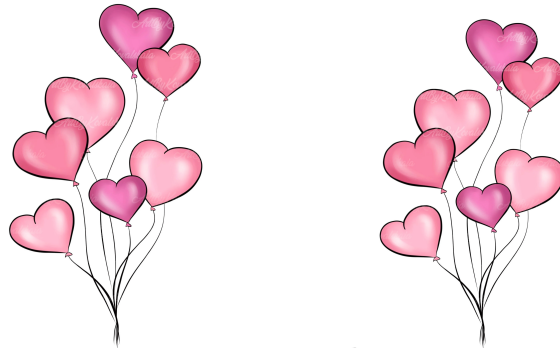


NEWS and NOTES from the HASTON LIBRARY

FEBRUARY 2023



In this issue...

- **Snow globe fun!!**
- **We're having a photo show!**
- **The Planetarium Lady returns**
- **Spotlight on: The Vermont Collection**
 - **Valentine's Day Story Time**
 - **Book discussion group**
 - **Did You Know...?**

SNOW GLOBE FUN!!



On Saturday, January 21st, friend of the library Miss Michelle stopped by to lead a snow globe craft. We had a great turnout, and everyone had lots of fun learning how to make a homemade snow globe!

WE'RE HAVING A PHOTO SHOW!

As you probably know, the Haston is a venerable institution and a historic building--and on occasion, it's also an art gallery! Local photographer David Pratt will be showing his photographs at the Haston, and we are really looking forward to focusing on David's work. He was born and raised in Bennington, Vermont, and is now a denizen of the Homestead Senior Living Facility, right here in Franklin. David has been taking photographs since the tender age of seven and is mostly self-taught, and he's inspired by nature and the ways in which the public responds to his work. He also volunteers at Franklin Central School, where he imparts his love of photography to the students there.

We'll have the open house for David's show on Thursday, February 23rd from 4:00 to 6:00 PM. Snacks and drinks will be provided, and David will say a few words about his work. The photos will be on display until April 6th. Please join us!



Here's an example of David's work. (You can tell it's his because it has his name on it).

THE PLANETARIUM LADY RETURNS!

Carrie Cruz, aka The Planetarium Lady, will be returning to Franklin on Saturday, February 25th! She'll be setting up her portable planetarium at the Town Hall again, and there will be two chances for you to see her program--at 10:00 and 11:15. Please call or email the library to reserve some space for you and your family!



PRESENTED BY THE HASTON LIBRARY
AND THE PLANETARIUM LADY

www.theplanetariumlady.com

SPOTLIGHT ON: THE VERMONT COLLECTION



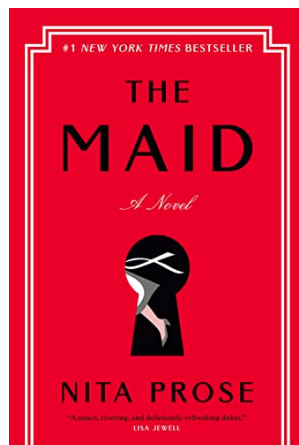
The latter half of January turned out to be a good time to reorganize the Haston's adult non-fiction section and the Vermont Collection. The Vermont Collection has many interesting titles that pertain to the state and its history, and some of them have been around for a while. One in particular, called the Gazetteer and Business Directory of Franklin and Grand Isle Counties, was published in January of 1883. As the name implies, it's a guide to the businesses that existed in the two counties at the time, but it also includes advertisements, town histories, and engravings. If you read the section on Franklin, you'll learn that in 1880, the population of the town was 1,439, and it was divided into ten school districts. Inside the back cover, there's a beautiful map of the two counties, and it's fascinating to see that there once was a railroad that ran along Lake Carmi, which presumably continued on into Frelighsburg, Quebec.

VALENTINE'S DAY STORYTIME



Friend of the library Miss Michelle will return on Saturday, February 11th at 11:30 AM for a Valentine's Day storytime and craft! Bring your little ones to the library to celebrate the holiday of love, with some snacks and maybe even a song or two!

BOOK DISCUSSION GROUP



This month, the library's book group will be discussing The Maid, by Nita Prose. They'll be meeting on Tuesday, February 21st at 4:00 PM at the library and on Facebook Messenger. Contact the library to reserve a copy of the book if you'd like to participate!

DID YOU KNOW...?

- It's a well-known fact that February is Black History Month, but did you know that it was first celebrated as Negro History Week in 1926? It wasn't until 1976 that it became official, when President Gerald Ford recognized it during the celebration of the American bicentennial year.
- February is also American Heart Month, and it's National Canned Food Month. (Not sure if the two are related in some way).
- Saint Valentine was a 3rd century Roman clergyman who was martyred on February 14, AD 269. His skull, crowned with flowers, is exhibited in the Basilica of Santa Maria in Cosmedin, Rome. Legend has it that before he was executed for refusing to renounce his faith, he sent a note to a young lady signed "From your Valentine," which is said to have inspired the romantic missives with which we're all familiar. He's also the patron saint of beekeepers and epilepsy.

CHECK OUR WEBSITE AND "LIKE" US ON FACEBOOK FOR MORE INFORMATION AND UPDATES!

Haston Library

P.O. Box 83

5167 Main St.

Franklin, VT 05457

(802) 285-6505

Website: franklinhastonlibraryvt.org

Email: librarian@franklinhastonlibraryvt.org

If you do not wish to continue receiving the newsletter, please send an email to the above address to be taken off the mailing list.